

WANT EXCELLENCE™



Everywhere Full Of Excellence

Innovative Life On-The-Go
WANT EXCELLENCE™ delivers functional solutions that consumers need, from power support to organizing their mobile life.

Superior Product Performance
Durable, high quality materials and excellent design mean GO EXCELLENCE™ products provide better performance, fit and organization.

Expectation Exceeded Value
Built to stringent standards, WANT EXCELLENCE may cost a little more but you are investing in more satisfied customers.

CAR MAT



IS03001

Universal Car Van Truck Floor Mats

- Size:front:28.3"x17.3" rear:18.1"x16.9"
- Trimmable PVC Rubber Compound.



IS03002

PVC Car Mats

- Size:front:27.1"x18.9" rear:18.9"x18.9"
- Traps dirt, dust, moisture, mud, debris



IS03003

5 Pcs PVC Car Mats

- Size:front:29.5"x19.4" rear:20x19"
- Easy to install and maintain.



IS03004

PVC Car Mats With Basin

- Size:front:28.3"x20.8" rear:19.6"x19.1"
- Equipped with nibbed rubber backing for non slip properties.



IS03005

PVC Car Mats

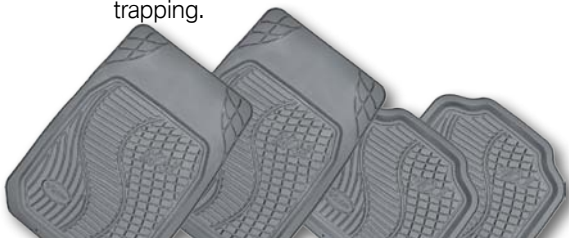
- Size:front:28.9"x19.5" ;rear:18.7"x17.9" ; middle:21"x9.8"
- High ridges and patterns for maximized dirt trapping.



IS03006

PVC Car Mats

- Size:front:30.1"x20.8" rear:20.6"x20.6"
- Easily Trimmable for a Semi-Professional custom Fit.



IS03007

PVC Car Mats

- Size:front:27.7"x19.6" rear:19.3"x18.7"
- 100% All-Weather Heavy Duty - Protects Vehicles from Dirt, Dust, Rain, Hail, Sleet, Ice, Snow.



IS03008

PVC Car Mats

- Size:front:28.5"x17.9" rear:17.7"x17.7"
- Super Easy to Clean.

Want Excellence



IS03009

PVC Cat Mat

- Size:front:28.7"x20.1" rear:20.1"x19.6"
- Deep grooves to catch dirt and other debris.



IS03010

Aluminum Cat Mat

- Size:front:28.3"x18.9" rear:17.3"x18.7"
- Heavy Duty Custom Fit Mats Durable Channel Construction holds water, snow and dirt.



IS03011

Pat Carpat With PVC Cat Mat

- Size:front: 24.2"x16.1" rear: 16.1"x11.8"
- Plush thick carpet.



IS03012

PVC Cat Mat

- Size:front: 26.3"x16.3" rear: 16.1"x13.3"
- Embossed design.



IS03013

PVC Cat Mat

- Size:front:28.7"x20" rear:20"x19.8"
- Easy to trim yourself for a more customized fit.



IS03014

PVC Cat Mat

- Size:front:28.9"x19.4" rear:18.7"x17.9"
- Universal design to fit all Cars & Trucks - All Weather Design. Non Skid Backing.



IS03015

Carpat PVC Cat Mat

- Size:front:29.7"x19.3" rear:19.1"x3.3"
- Spruce up your ride with a four-piece set of premium carpeted floor mats from Lo.gas.



IS03017

Car Mat

- Size:front: 25.4"x17.5" rear: 17.1"x13"
- Sturdy rubber and PVC construction.



IS03018

Footshaper Car Mat

- Size:front: 24.2"x16.1" rear: 16.1"x11.8"
- Non-Skid Backing.



IS03019

5Pcs Logo Car Mat

- Size:front:26.9"x17.5" rear:16.7"x13.3"
- Steering wheel cover provides comfortable grip.



IS03020

Car Mat

- Size:front:25.7"x17.5" rear:16.9"x12"
- It is an anti skid nib backing floor mat.



IS03021

Luxury Car Mat

- Size:front:25.7"x17.7" rear:17.7"x19.3"
- UV fade and stain resistant.



IS03022

Car Mat

- Size:front: 26"x18.1" rear:18.1"x13.7"
- Steering wheel cover made from Rubber and PVC.



IS03023

Car Mat

- Size:front: 26"x17.7" rear: 17.3"x13"
- With Aluminum plates in the middle.



IS03024

PVC Bottom Car Mat

- Size:29.7"x19.3" rear:19.1"x3.3"
- Heavy duty rubber with plush carpet insert.



IS03025

5Pcs Car Mat

- Size:front: 26.3"x19.7"
- rear: 18.5"x18.9"
- middle:24.8"x10.2"
- Spruce up your ride with a four-piece set of premium carpeted floor mats from Rubber Queen



IS03026

Colorful Car Mat

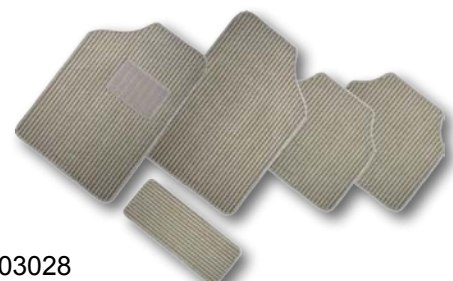
- Size:front:25.9"x16.9" rear:16.9"x12"
- Premium Needle Punch Carpet w/Heel Pad to ensure your mats last for many years.



IS03027

Car Mat

- Size:front:25.9"x17.7" rear:17.7"x11.8"
- Heavy nibbed Backing to keep the mats securely in place.



IS03028

Low-Profile Car Mat

- Size:front: 28.3"x19.1" rear: 18.9"x18.1"
- middle:24.8"x10.2"
- Eshco Binding for a quality finished look



IS03029

Simple Car Mat

- Size:front:25.9"x17.7" rear:17.7"x11.8"
- Universal shape to fit most cars, SUVs, Trucks and Vans.



IS03030

Rubber Bottom Car Mat

- Size:front:24.8"x16.1" rear:16.1"x11.8"
- Water Absorbent Heel Pad



IS03031

Car Mat

- Size:front: 24.2"x16.1" rear: 16.1"x11.8"
- Hard wearing and easying to clean.

INTERIOR ACCESSORIES

Let Auto Life be Simple!



IS17001

Back Seat Organizer

- Size:28.3"x5.9"x9.2"
- Made by 600D oxford



IS17003

Cargo Organizer

- Size:63.5"x 26" x 39.4"
- Organize tools, groceries, equipment or sporting goods in an extra-large truck



IS17005

Luggage Net

- Size: 27.2"x 26.4"
- High Flexibility because of a better material than others makes goods more safe.



IS17002

Car Visor Organizer

- Size:22.8"x22.8"x22"
- Fashion design.



IS17004

Back Seat Organizer

- Size:17.3"x12.6"
- Fits to hang on the back seat.



IS17006

Vent Drink Holder

- Size:3.9"x3.2"x2.6"
- Ideal for most soft drink bottles and cans



IS17007

Drink Holder

- Size:3.3"x2.7"
- Keeps the drink warm or cool with air conditioner airflow



IS17008

Ashtray With LED

- Size:2.5"x3.3"
- Lights up when lid is raised in dark conditions



IS17009

Ashtray with LED

- Size:2.6"x4.5"
- Easily stored and Sleek design



IS17010

Ashtray

- Size:3.1"x4.3"
- Made from heavy duty plastic



IS17011

Fire Style Ashtray With LED

- Size:3.1"x3.3"
- Fits into any standard cup holder



IS17012

Transform Cloth Hanger

- Size:8.2"
- Fit right inside your car



IS17013

Cloth Hanger

- Size:17.1"x5.3"
- Sturdy construct



IS17014

Cloth Hanger

- Size:17.1"x5.3"
- Keep your clothes neat



IS17015

PU Cover Cloth Hanger

- Size:17.3"x5.3"
- PU cover provides you soft grip.



IS17016

Simple Hook

- Size:5.5"x1.2"x0.9"
- Universal fit any most car with accessible metal rods holding the headrest



IS17017

Plastic Bag Hook

- Size:5.7"x1.8"x0.8"
- Easy installation, and easy to use with any bags, purse, grocery bags and more



IS17018

Glasses Clip

- Size:2.6"x0.98"x1.4"
- 2 Pcs Glass suitable



IS17019

Simple Glasses Clip

- Size:3.4"x0.94"x1.7"
- Easy but safe for sunglass



IS17020

360 Degree Swivel Phone Holder

- Size:4.7"x3.9"x2.9"
- Allows full 360 rotation for portrait and landscape viewing.



IS17021

Trash Can

- Size:7"x2.5"x4.7"



IS17022

Multi-function Suction Cup Phone Holder

- Size:4.7"x3.9"x2.9"
- Easily adjustable tilt and swivel mechanism for optimal viewing angle.



IS17023

Multi-function Suction Cup Phone Holder

- Size:3.5"x2.7"x2.7"
- Solid, lightweight construction and compact design for easy portability



IS17024

Phone Holder

- Size:2.4"x1.5"x3.3"
- Compact & Lightweight Design - perfect for Travel



IS17025

Skid Stop Mat

- Size:6.1"x3.9"x0.7"
- 100% Brand New & High Quality



IS17027

Pad Supporter

- Size:2.2"x2"x1.4"
- Can be mounted on tables, counters, desks, shelves or any flat edge



IS17028

Diagonal Backseat Ipad Supporter

- Size:10.9"x3.3"x5.9"
- High Quality ABS Materials Beautiful Long Arm Design and Solid Grip that Securely Push Electronic Devices Close to Your Fingers and Sight



IS17029

Backseat Phone Holder

- Size:4.7"x3.9"x2.9"
- For use on carts, wheelchairs , strollers, dollies, fork lifts, and more...



IS17030

Compass And Thermograph

- Size:3.5"x3.5"x2.2"
- Includes magnetic variation adjustment (MVA)



IS17031

360 Degree Swivel Phone Holder

- Size:3.9"x2.3"x5.3"
- Supports mobile devices with width ranging between 2.28" and 4.72".



IS17032

360 Degree Swivel Phone Holder

- Size:3.9"x2.3"x2"
- Easy mount using Push in Technology



IS17026

Tissue Box Shelf

- Size:8.4"x2.8"x0.3"
- Fitment:Can be fixed on sun visor or seat back of the car



IS17033

Door Decorative Sticker

- Size:4.4"x0.9"x0.3"
- They can protect your car from scratches or unexpected possible damages in a decorative way



IS17034

Drop Stop

- Size:17.9" x 5" x 2.6"
- Drop Stop blocks that annoying yet ever so dangerous gap between your car or truck seat and center console



IS17035

Sun Visor

- Size:11.8"x6.8"x1.8"
- Yellow plate is used in night and fog day.



IS17036

Seat Belt Clip

- Size:2.2"x1.6"x0.6"
- designed with open close buckles, convenient for you to adjust seat belt's length.



IS17037

Anti-collision Sticker

- Size:12.9"x1.7"x3.8"
- The item which is generic and suitable for all cars.



IS17038

Door Decorative Sticker

- Size:1.9"x1.1"x0.1"
- No Modification Needed, Easy Installation



IS17039

Car Computer Desk

- Size:13.3"x11.8"x1.5"
- Light enough to carry, but sturdy enough to support a notepad, lunch, or even a laptop



IS17040

String Bag

- Size:5.8"x3.1"x0.4"
- Unique shape ,simple style ,easy to install.

CAR FAN



SS03001

Solar Powered Window Auto Vent

- Size:6"length,4"width
- Solar powered, no batteries are needed, reduces air conditioning use and fuel consumption
- Protect expensive electric equipment from high temperature



RoHS CE



SS03002

5.5"Mini Car Fan(guard diameter:5.5"

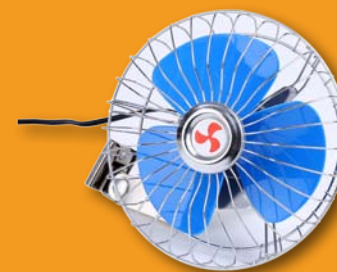
- Size: 5inch plastic blade(diameter:110mm),Operated by 12V DC,Current:0.45 ~ 0.5 A Rotational
- speed:4500RPM,With ON/OFF Switch on back head,5m wire length with normal cigar-lighter,3 plastic Leaves
- Min fan can let in the window and easy to storage



SS03003

6 "Fans With Two Speed Option Switch

- Size:DC12V/24v. metal stripe, clamp type, cigarette plug
- With slip can fit in any car window and the switch can control speed of the wind



SS03004

6" 30 Grills Half-Guard Car Fan(chromeplated or spray plastic)

- Size: Half enclosed metal guard(diameter:6.9") ,Oscillating, 6 inch fan blade(diameter:5.5") Operated by 12V DC or 24V DC(Optional), Screw mounting, Without 2 speeds switch(optional)
- Metal Cage for safety



SS03005

8" 30 Grills Half-Guard Car Fan(chromeplated or spray plastic)

- Size: Half enclosed metal guard (diameter:8.5"),Oscillating, 8 inch fan blade(diameter:7.4"), Screw mounting, Without 2 speeds switch(optional), Operated by 12V DC or 24V DC(Optional)
- Portable and easy to install.



SS03006

8" 60 Grills Half-Guard Car Fan (chromeplated or spray plastic)

- Size: Half enclosed metal guard (diameter:8.5"),Oscillating, 8 inch fan blade(diameter:7.4"), Screw mounting, without 2 speeds switch(optional), Operated by 12V DC or 24V DC(Optional)
- Plugs into accessory outlet for power

NEW



CE02001

Multi-Fuction Cigarette Socket & Mobile Holder

- Size: input:12-24V/DC, output:5V/DC 2.1A
- with led indicator, Fixed objects, protect the goods can safety to charge while driving



NEW



CE02005

Hot Selling 2 Ways Cigarette Lighter Socket With 2 USB

- Size: 12V 2 ports, cord length: 5"
- With long wire,can be able to move anyway in the car

CAR CIGARETTE SOCKET

RoHS CE

Want Excellence



CE02002

3 ways cigarette lighter socket

- Size:4.9x1.9x1.3",input:12-24VPC, output:12-24V/DC 60W
- Can charge the battery at the same time for three items



CE02003

Hot selling 3 ways cigarette lighter socket

- Size:4.3x2.4x1.3" input:12-24V/PC, output:12-24V/DC 80W
- With long wire,can be able to move anyway in the car



CE02004

Hot selling 3 ways cigarette lighter socket with USB

- Size:4.8x4.6x1.3" input:12-24V/PC, output:12-24V/DC 60W,USB:500mA
- Can folding and easy to carry or storage



CE02006

3 Ways Cigarette Lighter Socket With USB

- Size: :5.3x2.8x1.4" input:12-24V/DC, output:12-24V/DC 80W,USB:5V 800mA
- Special design can use in different direction



CE02007

New 2 Ways Cigarette Lighter Socket With 2 USB

- Size: 4x3.5x1.4" input:12-24V/DC, output:12-24V/DC 80W,USB:3A
- Two USB and two socket is suitable for couples



CE02008

Simple Two USB Iphone Charger

- Size: 2.4x1.2x1.2" input:12-24V/DC, output:5V/DC 2.1A
- Simple charger, can carry anytime and easy to storage



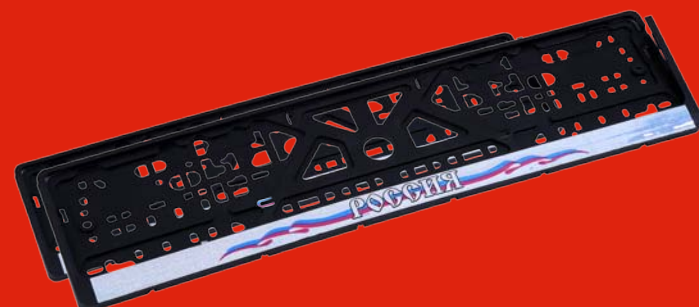
CE02009

New 2 Ways Cigarette Lighter Socket With 3USB

- Size: 4x3.5x1.4" input:12-24V/DC, output:5V/DC 80W,USB plug:1A,USB:3A
- New design with USB socket, bring new Visual effect

Want Excellence

CAR LICENSE FRAME PLATE



OS03006

Car License Frame Plate With Lock Latch

- Size: 20.8x5.23"
- Material: PP



OS03001

Silver Electroplate Car License Plate Frame

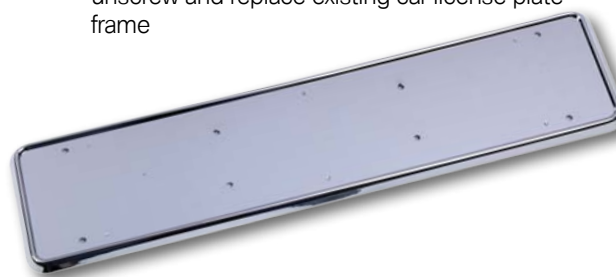
- Size: 20.9"x5.2"
- Easy installation with existing screws, simply unscrew and replace existing car license plate frame



OS03002

Electroplate Europea Size Car License Frame

- Size: 21"x5.5"
- Material: PP plastic



OS03003

Water Electro Plate Plastic Car License Plate

- Size: 21.2"x5.1"
- Material: ABS



OS03004

Europe Metal Car License Plate Frame

- Size: 20.6"x4.7"
- Material: 201# stainless steel frame, zinc painted iron plate; Hot Sell In Russia



OS03005

Europe Size Car License Frame

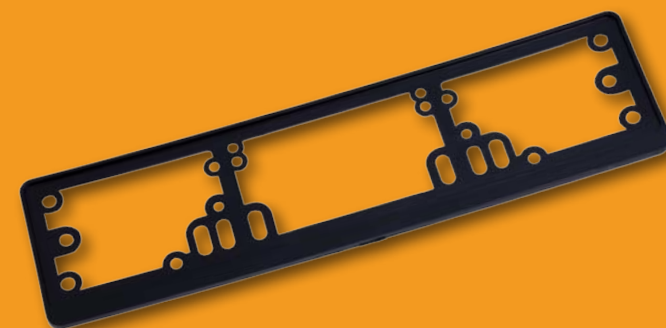
- Size: 21.1"x5.7"
- Material: ABS frame, PS plate



OS03007

Europe Size Car License Frame

- Size: 20.6"x5.4"
- Material: PP



OS03008

Simple ABS Car License Plate

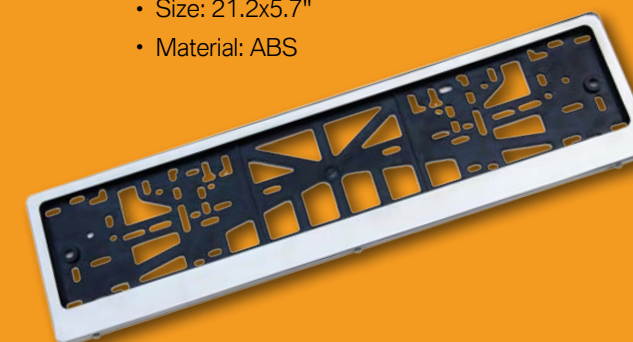
- Size: 21.2x5.7"
- Material: ABS



OS03009

Car License Frame Plate with Lock Latch

- Size: 12.8x6.9" for middle east car license
- Material: PP



OS03010

Car License Frame Plate With Double Sides Lock Latch

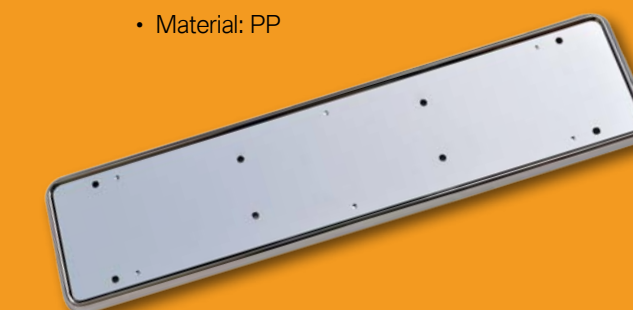
- Size: 20.8x5.1"
- Material: PP



OS03011

Car License Frame Plate with Lock Latch

- Size: 20.8x5.23"
- Material: PP



OS03013

Car License Frame Plate

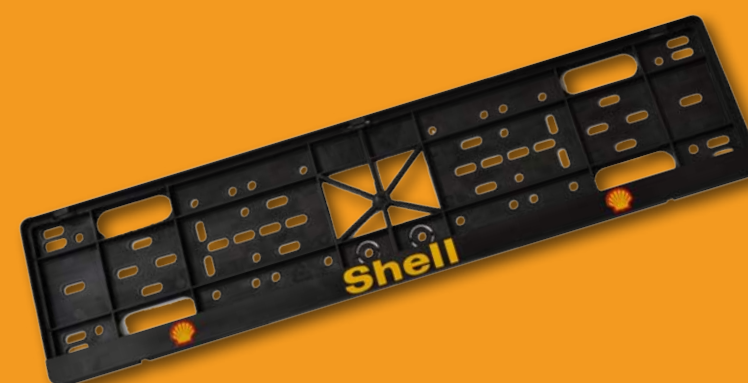
- : 21.2x5.15x4"
- Material: ABS



OS03012

Car License Frame Plate

- Size: 20.8x5.43x4.7"
- Material: ABS plate, Stainless frame



OS03014

Promotional Car License Frame Plate

- Size: 21x5"
- Material: PP



NOT DOWN™

SIMPLE, SAFE AND ULTRA POWER

NOT DOWNTM in hand help your vehicles not down in any serious situation.

Built to rigorous test & inspect standards, NOT DOWNTM is the most safety & powerful auto tools.



3
YEARS
WARRANTY



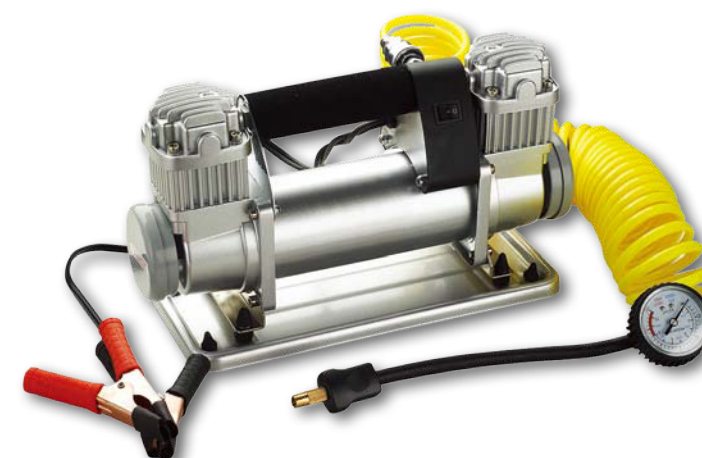
AUTO TYRE INFLATOR

RoHS CE

CE01001

Hi Performance Portable Air Compressor

- Cylinder diameter 44mm, Max pressure 150PSI, Air flow 60L/min, Max Duty cycle 20minutes
Air hose 5m PA hose+0.25m rubber hose, Cord 2.5m
- Motor (Made in Japan) is 100% ball bearing equipped with unique linear brush pre-load system for extra long life, low heat and quiet operation.
- Motor is internally thermal protected against extreme temperature damage
- Compact design makes it the highest flowing compressor in its class
- Over-pressure safety valve equipped
- Compact design makes it the highest flowing compressor in its class



CE01002

Double Cylinder Powerful Air Compressor

- Power supply DC12V
- Rated current 25A
- Cylinder diameter 2*30mm
- Max pressure 150PSI
- Max Duty cycle 40minutes
- Air hose 0.25m+5m air hose(PU)
- Cord 3m
- Net weight 3.5kg



CE01003

Double Cylinders High Power Air Compressor

- Power supply DC12V
- Rated current 25A
- Cylinder diameter 2*30mm
- Max pressure 150PSI
- Max Duty cycle 40minutes
- Air hose 0.25m+5m air hose(PU)
- Cord 3m
- Net weight 3.5kg

Be Safe & Powerful



CE01004

Double Cylinders High Power Air Compressor

- Power supply DC12V
- Rated current 40A, over load protection
- Cylinder diameter 2*40mm
- Max pressure 150PSI
- Max Duty cycle 10minutes, over-thermal protection and recover automatically
- Air hose 2.4m
- Cord 3m
- Net weight 6.9kg



CE01005

Double Cylinders High Power Air Compressor

- Power supply DC12V
- Rated current 30A
- Cylinder diameter 2*30mm
- Max pressure 150PSI
- Max Duty cycle 40minutes
- Air hose 0.25m+5m air hose(PU)
- Cord 3m
- with light



CE01006

New Design Digital High Power Air Compressor

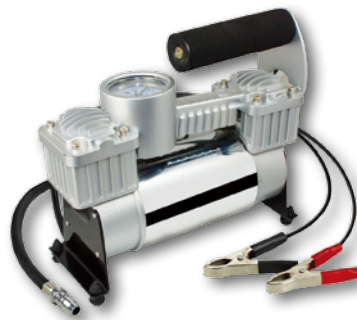
- Power supply DC12V
- Rated current 16A
- Cylinder diameter 30mm
- Max pressure 150PSI
- Max Duty cycle 10minutes
- 0.7m air hose
- Cord 3m
- product size 22*16.5*11cm



CE01007

High Power Portable Air Compressor

- Power supply DC12V
- Rated current 30A
- Cylinder diameter 2*30mm
- Max pressure 150PSI
- The actual air flow :50L/min
- Inflate one tyre time:2.0-3.0minutes
- Max Duty cycle 40minutes
- Air hose 0.25m+5m air hose(PU)
- Cord 3m



CE01008

High Power Air Compressor

- Power supply DC12V
- Rated current 30A
- Cylinder diameter 2*30mm
- Max pressure 150PSI
- Max Duty cycle 40minutes
- Air hose 0.25m+5m air hose(PU)
- Cord 3m



CE01009

High Power Air Compressor

- Power supply DC12V/24V
- Rated current 30A
- Cylinder diameter 40mm
- Max pressure 150PSI
- Max Duty cycle 40minutes
- Air hose 0.25m air hose, 5m coiled hose
- Cord 2.4m
- Net weight 24.8kg
- Gross weight 25.7
- Product size 33*29*24.5cm



CE01010

High Power Air Compressor with Light

- Power supply DC12V
- Rated current 14A
- Cylinder diameter 30mm
- Max pressure 150PSI
- Max Duty cycle 40minutes
- Air hose 0.8m, or 2m air hose(PU)
- Cord 3m
- Net weight 1.5kg
- Product size 17*8*14cm



CE01012

Popular Air Compressor with Light

- Power supply DC12V
- Rated current 14A
- Cylinder diameter 30mm
- Max pressure 150PSI
- Max Duty cycle 20minutes
- Air hose 5m PU hose
- Cord 3m
- Net weight 2.8kg
- Product size 23.5*13.5*22.5cm



CE01011

New Design Air Compressor

- Power supply DC12V
- Rated current 14A
- Cylinder diameter 30mm
- Max pressure 10BAR, 150PSI
- Max Duty cycle 40minutes
- Air hose 0.8m
- Cord 3m
- Net weight 1.95kg
- Product size 20*16*17.5cm



CE01013

- Popular Air Compressor
- Power supply DC12V
- Rated current 14A
- Cylinder diameter 30mm
- Max pressure 150PSI
- Max Duty cycle 20minutes
- Air hose 5m PU hose
- Cord 3m
- Net weight 2.8kg
- Product size 23.5*13.5*22.5cm

CE01014

Simply Air Compressor with Light

- Power supply DC12V
- Rated current 16A
- Cylinder diameter 32mm
- Max pressure 10BAR, 150PSI
- Max Duty cycle 20minutes
- Air hose 1m
- Cord 3m
- Net weight 2kg
- Product size 23*21.5*20cm





CE01015
Traditional Air Compressor with Light

- Power supply DC12V
- Rated current 15A
- Cylinder diameter 30mm
- Max pressure 150PSI
- Max Duty cycle 10minutes
- Air hose 0.75m air hose (or 5m PU hose)
- Cord 3m
- Net weight 1.5kg
- Product size 23.5*13.5*22.5cm



CE01016
New Design Air Compressor with Light

- Power supply DC12V
- Rated current 25A
- Cylinder diameter 30mm
- Max pressure 150PSI
- Max Duty cycle 40minutes
- Air hose 0.25m+5m air hose(PU)
- Cord 3m
- Net weight 3.5kg
- Product size 32*24*25cm



CE01017
Arc Handle Air Compressor

- Power supply DC12V
- Rated current 10A
- Cylinder diameter 30mm
- Max pressure 100PSI
- Max Duty cycle 40minutes
- Air hose 0.55m
- Cord 3m
- Net weight 1.7kg
- Product size 22*9*22cm



CE01018
Classical & Cheap Air Compressor

- Power supply DC12V/24V
- Rated current 14A
- Cylinder diameter 30mm
- Max pressure 100PSI
- Max Duty cycle 40minutes
- Air hose 1m
- Cord 3m
- Net weight 1.9kg
- Product size 23*21.5*20cm



CE01019
High Power Air Compressor

- Power supply DC12V/24V
- Rated current 14A
- Cylinder diameter 30mm
- Max pressure 100PSI
- Max Duty cycle 40minutes
- Air hose 1m
- Cord 3m
- Net weight 1.9kg
- Product size 23*21.5*20cm



CE01020
High Power Air Compressor kit

- Power supply DC12V
- Rated current 25A
- Cylinder diameter 2*30mm
- Max pressure 150PSI
- Max Duty cycle 40minutes
- Air hose 0.25m+5m air hose(PU)
- Cord 3m
- Net weight 3.5kg
- Product size 32*24*25cm



CE01021

- Power supply DC12V
- Rated current 16A
- Cylinder diameter 32mm
- Max pressure 10BAR, 150PSI
- Max Duty cycle 20minutes
- Air hose 1m
- Cord 3m
- Net weight 2kg
- Product size 23*21.5*20cm



CE01022
Simply Air Compressor with plastic box

- Power supply DC12V
- Rated current 18A
- Cylinder diameter 30mm
- Max pressure 80PSI
- Max Duty cycle 20minutes
- Air hose 0.6m air hose (PU)
- Cord 3m
- Net weight 1.75kg
- Product size 19*8.5*24cm

CE01023

Tank Air Compressor with Light

- Power supply DC12V
- Power: 120W
- Cord 4.5m



CE01024

Promotional Air Compressor

- Power supply DC12V
- Rated current 15A
- Cylinder diameter 28mm
- Max pressure 80PSI
- Max Duty cycle 10minutes
- Air hose 0.55m
- Cord 3m
- Net weight 1.37kg/pc
- Product size 16*15.5*6.5cm



CE01025
Classical & Cheap Air Compressor

- Voltage: DC 12V; Dimension: 13x 11.5x 7.0cm(L*W*H), 300PSI.
- Robust and durable design 12 Volt Air
- Compressor is perfect for your cars, bikes, footballs and inflatable toys



CE01026
300PSI plastic Portable Pump

- Power Supply : DC 12V
- Rated current : 10A
- Maximum Pressure : 300 PSI;
- Power Cable Length : 2.7m



OS20001

Faithful Foot Pump Double Cylinder with Gauge

- Size:ø55x120mm
- rubber feet and an ergonomic, rubberized tread plate improve surface grip and prevent foot slippage.



OS20002

Faithful Foot Pump with Gauge

- Size:ø55x100mm
- rubber feet and an ergonomic, rubberized tread plate improve surface grip and prevent foot slippage.



OS20003

Simple Foot Pump

- Size:ø55x100mm
- Needle valve and adapter for inflatables



OS20003

Simple Foot Pump

- Size:ø55x100mm
- Needle valve and adapter for inflatables



OS20005

Mini Bike Pump

- 8 bar, total 31cm
- Flexible hose for easy filling and fold-down foot pads for easy pumping

CAR JACKS

US STANDARD BOTTLE JACKS



MODEL	Capacity(Ton)	Min.Helght(mm)	Lit Helght(mm)	AdjustableHwlght(mm)	Weight(kgs)	Certitcate
OS21001	2	181	116	48	2.3	ANSI / ASME
OS21002	4	194	118	60	3.1	ANSI / ASME
OS21003	6	216	127	70	4.3	ANSI / ASME
OS21004	8	230	147	80	5.4	ANSI / ASME
OS21005	10	230	150	80	6.4	ANSI / ASME
OS21006	12	230	155	80	7.2	ANSI / ASME
OS21007	16	230	150	80	8.3	ANSI / ASME
OS21008	20	242	150	60	10.0	ANSI / ASME
OS21009	30	240	130	/	20.1	ANSI / ASME
OS21010	50	236	120	/	28.3	ANSI / ASME
OS21011	100	335	180	/	71	ANSI / ASME

EURO STANDARD BOTTLE JACKS



MODEL	Capacity(Ton)	Min.Helght(mm)	Lit Helght(mm)	AdjustableHwlght(mm)	Weight(kgs)	Certitcate
OS21012	2	181	116	48	2.9	TUV-GS CE
OS21013	3	194	118	60	3.6	TUV-GS CE
OS21014	4	194	118	60	3.3	TUV-GS CE
OS21015	5	216	127	70	4.8	TUV-GS CE
OS21016	6	216	127	70	4.5	TUV-GS CE
OS21017	8	230	147	80	5.7	TUV-GS CE
OS21018	10	230	150	80	6.6	TUV-GS CE
OS21019	12	230	155	80	7.3	TUV-GS CE
OS21020	15	230	150	80	8.4	TUV-GS CE
OS21021	20	242	150	60	10.8	TUV-GS CE
OS21022	32	285	180	/	22.3	TUV-GS CE
OS21023	50	300	180	/	32.2	TUV-GS CE



HYDRAULIC
TROLLEY
JACKS



HYDRAULIC GARAGE JACKS

MODEL	Capacity(Ton)	Min.Height(mm)	Max Height(mm)	AdjustableHwight(mm)	Weight(kgs)	Certitlcate
OS21049	2. 25	135	440	/	24. 5	/
OS21050	2. 25	135	480	/	28. 5	ANSI / ASME
OS21051	2. 25	140	476	/	30. 8	TUV-GS CE
OS21052	2. 25	130	490	/	33. 5	ANSI / ASME
OS21053	2. 25	145	520	/	36	TUV-GS CE
OS21054	2. 5	130	490	/	35	ANSI / ASME
OS21055	2. 75	145	520	/	36	TUV-GS CE
OS21056	3	135	500	/	30	/
OS21057	3	145	490	/	33. 1	/
OS21058	3	130	495	/	35. 2	ANSI / ASME
OS21059	3	145	520	/	37. 4	ANSI / ASME
OS21060	3	145	520	/	39. 5	TUV-GS CE

MODEL	Capacity (Ton)	Min.Helght (mm)	Max Height (mm)	AdjustableHwight (mm)	Weight (kgs)	Certitlcate
OS21024	2	140	300	/	5. 6	ANSI / ASME TUV-GS CE
OS21025	2	125	300	/	6. 3	ANSI / ASME
OS21026	1. 5/2	128	300	/	7	TUV-GS CE
OS21027	2	135	330	/	7. 3	TUV-GS CE
OS21028	2	135	345	/	8. 5	TUV-GS CE
OS21029	2	135	330	/	8. 5	TUV-GS CE
OS21030	2	135	330	/	8. 6	TUV-GS CE
OS21031	2	140	340	/	8. 7	TUV-GS CE
OS21032	2	140	340	/	9	TUV-GS CE
OS21033	2	130	345	/	9. 1	TUV-GS CE
OS21034	2	130	340	/	9. 4	TUV-GS CE
OS21035	2	130	350	/	10. 5	TUV-GS CE
OS21036	2	135	380	/	10	TUV-GS CE
OS21037	2	130	280	/	10. 7	TUV-GS CE
OS21038	2	85	330	/	10	TUV-GS CE
OS21039	2	130	350	/	10. 5	TUV-GS CE
OS21040	2	130	350	/	11	TUV-GS CE
OS21041	2/2. 5	130	375	/	13	ANSI / ASME
OS21042	2. 5	135	380	/	13. 6	ANSI / ASME
OS21043	2/2. 5	89	359	/	14	ANSI / ASME TUV-GS CE
OS21044	3	135	410	/	16	TUV-GS CE
OS21045	3	130	410	/	19	ANSI / ASME
OS21046	3	130	410	/	19	ANSI / ASME
OS21047	2. 5/3	150	530	/	20	ANSI / ASME TUV-GS CE
OS21048	2. 5/3	150	530	/	19. 9	ANSI / ASME TUV-GS CE

US STANDARD JACK STAND AMSI/ASME



MODEL	Capacity (Ton)	Min.Helght (mm)	Max Height (mm)	Weight (kgs)	Certitlcate
OS21049	2	275	420	5. 2	ANSI / ASME
OS21050	2	250	380	4. 7	ANSI / ASME
OS21051	3	285	425	6. 3	ANSI / ASME
OS21052	3	270	410	6	ANSI / ASME
OS21053	3	355	520	9	ANSI / ASME
OS21054	6	390	605	12. 4	ANSI / ASME
OS21055	12	465	715	27. 3	ANSI / ASME



US STANDARD DOUBLE LOCKING
JACK STAND AMSI/ASME



MODEL	Capacity (Ton)	Min.Helght (mm)	Max Height (mm)	Weight (kgs)	Certitlcate
OS21056	2	278	420	5. 2	ANSI / ASME
OS21057	3	288	425	6. 4	ANSI / ASME
OS21058	6	395	605	12. 4	ANSI / ASME
OS21059	12	468	715	27. 3	ANSI / ASME



FOLDABLE JACK STAND TUV-GS



MODEL	Capacity (Ton)	Min.Helght (mm)	Max Height (mm)	Weight (kgs)	Certitlcate
OS21060	2	277	365	3	TUV-GS
OS21061	3	285	400	4	TUV-GS
OS21062	6	375	570	4. 3	TUV-GS





MODEL	Capacity (Ton)	Min.Helght (mm)	Max Helght (mm)	Total Length (mm)	N.W/G.W (kg)	Package Size (mm)	QTY/CTN (DCS)	QTY/20'CY (DCS)
OS21063	0.6 (Ton)	85	330	375	2/2.3	415X440X260	10	5.2
OS21064	0.8 (Ton)	85	330	375	2.1/2.4	415X440X260	10	4.7
OS21065	1 (Ton)	88	380	426	2.5/2.8	500X455X255	10	6.3
OS21066	1.5 (Ton)	95	390	450	3.3/3.5	660X470X230	10	6
OS21067	2 (Ton)	120	395	450	3.5/4	660X470X260	10	9



MODEL	Capacity (Ton)	Min.Helght (mm)	Max Helght (mm)	Total Length (mm)	Total With (mm)	N.W/G.W (kg)	Package Size (mm)	QTY/CTN (DCS)
OS21068	0.6 (Ton)	83	314	365	88	1.65/1.95	520X400X210	10
OS21069	0.8 (Ton)	75	360	425	110	1.95/2.25	440X370X175	6
OS21070	1.5 (Ton)	97	389	446	122	3.4/3.8	460X400X255	6
OS21071	1.6 (Ton)	92.5	400	465	96.2	3.1/3.4	640X520X115	5
OS21072	2 (Ton)	98	442	500.4	112	3/3.3	550X280X115	2



TIRE REPAIR KIT

OS20010

Cool LED Tire Valve Cap

- 2xLED Flash light(included).
- 6 x AG10 Batteries included
- Enhances safety by increasing visibility at night and during bad weather conditions



OS20006

8Pcs Tire Plug Kit

- Includes pistol-style comfort grippers, rubber cement and extra-strong tire repair strings
- Easy-to-use kit is simple and effective



OS20007

6 Pcs T-Handle Tire Plug Kit

- Includes T comfort grippers, rubber cement and extra-strong tire repair strings
- Easily repair punctures without removing the tire from the rim



OS20008

7Pcs T Metal Handle Tire Plug Kit

- Metal handle for durable use, 3 Pcs needles for replacement.
- let you repair the puncture quickly and effectively



OS20009

12Pcs Bike Patch Kit

- Include metal levers, glue, patches, metal rasp, Bone wrench and valve core.
- Quick and easy to use on all tires



OS20011

8Pcs Simple Bike Patch Kit

- Include glue, patches, metal rasp
- Necessary for outdoor travel



OS20012

Chrome all-Sleeve&Cap straight



OS20013

Brand Logo Valve Cap



OS20014

Brass Valve Caps



OS20015

Tire Pressure Showing Valve Cap



OS20016

Silver Aluminum Valve Cap



OS20017

Brass Valve Cores



OS20018

Cheap Plastic Valve Caps



OS20019

Metal Tire Valve Repair Tool



OS20020

2pcs Bike Valve Cap



OS20021

Gorilla Automotive Pencil Style Tire Pressure Gauge

- Size: pressure Range of 0 to 50-PSI
- Features Precision Made Components
- Gives an Accurate Readout Every Time
- Quality Workmanship Ensures Durability
- Gauge Comes in Tamper-Resistant Clamshell Packaging



OS20022

Metal Dialtire Depth Gauge (0-60 Psi Range)

- Size:2 inch face, a 12 inch flex hose, accurate to within +/- 1 percent
- Flex hose has a swivel chuck and pressure release valve



OS20023

Metal Dial Tire Pressure Gauge - Reads 10-100 PSI

- Size: Dial tire pressure gauge.reads 10 to100PSI,dual Scale
- Metal dial and body and includes a vinyl storage pouch
- Great for ATV's motorcycles and automotive vehicles



OS20024

Digital Tire Depth Gauge(2 in1)

- Size: 3.4 x 2 x 1.1"
- Reference coefficient:
- Pressure range:3-100psi,0.20-6.90bar
- Tire tread depth range:0-15.8mm
- Resolution:0.5psi/0.05bar
- Power:CR2032 3V lithium coin cell
- On/off key,Auto shut off, Keyring,
- Accuracy:±1 psi F.S.+0.5psi ±±0.3mm
- Easy to carry and save the space



OS20025

Digital Tire Pressure Gauge With Back Light

- Product size:4.3x2x0.9", net weight: 44 g
- Reference coefficient:
- Pressure range: 0-100psi, 0-6.85bar, 0-690kpa
- Pressure unit:psi, bar,kpa(optional)
- Resolution:0.5psi/0.05bar
- Back-lit LCD and light on gauge's head
- Power: 4 x AG13 battery
- On/off key,Auto shut off
- Accuracy:±1.5 psi F.S.
- Lighted nozzle and display screen for ultimate visibility in low light or at night



OS20026

Digital Tire Gauge, 100 PSI

- Size:100 PSI
- Digital display instantly and clearly shows exact reading, eliminating the guesswork of analog gauges
- Nozzle seals to valve stem for quick and accurate measurements
- Ergonomic design comfortably fits hand and features a soft, non-slip surface for sure grip



OS20027

Hot Selling Digital Tire Depth Gauge(5 in1)

- Product size: 6.9 x2.6 x 1.1"
- Flashlight, Emergency life hammer,Seatbelt cutter,Compass
- Pressure range:3-100psi,0.20-6.90bar,20-700kpa,0.2-7.05kgf/cm².
- Pressure unit: psi,bar, kpa,kgf/cm²(optional)

- Resolution:0.5psi/0.05bar.
- Power:2xAG8 battery(included).2xAAA battery (not include)
- On/off key,Auto shut off, Accuracy:±1 psi
- A variety of functions used in combination, let tires have no trouble back at home



OS04001

4.5T Tow Rope

- Specification: 4.5T, 3.1M, 0.5KG.

OS04002

3T Tow Rope

- Specification: 3T, 4M, 0.9KG.
- Designed to tow vehicles

OS04004

4x60CM Tow Rope

- Specification: 60CM, 0.24KG
- Constructed from high quality polypropylene braided rope

OS04005

Tow Rope

- Specification: 11.4x100CM
- Includes protective sleeves and rust resistant zinc plated hooks



OS04003-1.8T

1.8T Tow Rope

- Specification: 1.8T, 4M, 0.5KG.
- Package includes two safety hooks

OS04003-3T

3T Tow Rope

- Specification: 3T, 4M, 0.6KG.
- Package includes two safety hooks

OS04003-5T

5T Tow Rope

- Specification: 5T, 4M, 1.05KG.
- Package includes two safety hooks



OS04007

Tow Rope

- Specification: 75mmX5m, pull≤5000KG
- Forged steel with retaining clips



OS04006

Tow Rope Series

Specification:

OUTER DIAMETER	PULL	LENGTH 1	LENGTH 2
Φ 4MM	2000KG	4M	3M
Φ 6MM	3000KG	4M	3M
Φ 8MM	4000KG	4M	3M
Φ 10MM	5000KG	4M	3M
Φ 12MM	6000KG	4M	3M

TOW ROPE RATCHET



Heavy duty ratchet buckle with zinc plated positive locking E-fitting ends

①

OS04008-5T, 12M

12M Ratchet Buckle

- Specification: 5T, 12M, 2.7KG

②

OS04008-2T, 6M

6M Ratchet Buckle

- Specification: 5T, 6M, 2.35KG

③

OS04008-5T, 10M

10M Ratchet Buckle

- Specification: 5T, 10M, 2.9KG

④

OS04008-2T, 5M

5M Ratchet Buckle

- Specification: 2T, 5M, 2.35KG

⑤

OS04008-5T, 8M

8M Ratchet Buckle

- Specification: 5T, 8M, 3.15KG

⑥

OS04008-0.5T, 6M

6M Ratchet Buckle

- Specification: 0.5T, 6M, 0.48KG

⑦

OS04008-5T, 6M

6M Ratchet Buckle

- Specification: 5T, 6M, 2.85KG

⑧

OS04008-0.5T, 5M

5M Ratchet Buckle

- Specification: 0.5T, 5M, 0.45KG

BATTERY CHARGER & ANALYZER



- CE03001
- 2 amp trickle charge
 - 10amp fast charge-for everyday charging needs
 - 50 amp engine start-for emergency starting

- CE03002
- 2 amp trickle charge
 - 12amp fast charge-for everyday charging needs
 - 75amp engine start-for emergency starting

RoHS CE

- For all 12V lead acid batteries
- Battery type switch to set proper charge rate for SLI or Deep Cycled batteries
- Charge Rate Switch to set the Maximum charging current as below
- 2LED indicators-Full Charge and Power On
- With the Ammeter indicates the charging current

12V Battery Charger w/Engine Start



- CE03003
- 2/6A,6V/12V Battery Charger

- CE03004
- 2/6/10A, 6V/12V Battery Charger

- For all 12V lead acid batteries
- Battery type switch to set proper charge rate for SLI or Deep Cycled batteries
- Charge Rate Switch to set the Maximum charging current as below
- 2LED indicators-Full Charge and Power On
- With the Ammeter indicates the charging current



- CE03005
- Luxury DC 12V Battery Charger
- Input:220-240V/50Hz Power 60W, Output: 0.8A /3.8A.
 - 4-stage intelligent charging characteristics. Continuous maintenance charging function.
 - Dust proof and splash-proof (IP 65). 2 clamps.
 - Cord 150 cm with plug. Battery capacity: 6 Ah-100 Ah.
 - Uses for WET, GEL, AGM and maintenance-free lead-acid batteries



- CE03006
- Car Battery Charger
- Input:100V-240V/ Output:DC12V
 - Current:0.75-1.25Amp
 - The Perfect device for batteries maintaining and charging
 - For cars,motorcycles,boats,farm machinery,RV's



- CE03007
- Emergency Car Jump Start
- For cars,Minivans and light trucks
 - Multiple jump starts
 - Starts your car in minutes
 - Jump starts your car through the cigarette lighter



- CE03008
- Easy Start
- Input: 12V-13.8V/ Output:14.5V DC
 - Output current:6A max
 - For boosting/starting your problematic car battery in minutes
 - Very simple operation: just plug,charge,start



- CE03009
- Easy-Start
- Portable emergency easy-start
 - Unique switch circuit design for ultra-fast boost-up of dead car
 - Work with all 12V automobile vehicles



- CE03010
- Car Battery Analyzer
- For DC 12V car battery test



- CE03011
- Auto Charging System Analyzer
- DC12V
 - For battery test/alternator test



- CE03012
- Car Battery Analyzer
- For DC 12V car battery test



- CE03013
- DC to AC Power Invert-er
- AC outlet 30W watts of power to run and charge laptops, ipad cell phones,MP3
 - With DC12V outlet
 - USB port 5V DC2.1A
 - LED Power indicator



- CE03014
- 3 In 1 Power Invert-er
- Power & Charge your electronic devices from your cars
 - Power for AC devices rated up to 100W
 - Charge & power your laptop,GPS,Cell phone and more
 - Two USB ports:2. 1/1.0A
 - One 12V outlet



- CE03015
- DC to AC Power Invert-er
- Power for AC devices rated up to 150watts
 - Two AC outlets. 12-Volt Power port.
 - Two USB power ports:2.0/1.0A
 - High/Low voltage protection
 - Over-temp and overload protection

US Standards Booster Cable

Cable Parameter & Length can be customized according to customers' requirement!



CE08002



CE08003



CE08004



CE08005



CE08006



CE08007



CE08008



CE08009



CE08010



CE08011



CE08012



CE08013



CE08014



Europe Booster Cable

Cable Parameter & Length can be customized according to customers' requirement!



CE08035



CE08015



CE08016



CE08017



CE08018



CE08019



CE08020



CE08021



CE08022



CE08023



CE08024



CE08025



CE08026



CE08027



CE08028



CE08029



CE08030



CE08031



CE08032



CE08033



CE08034

PACKAGE STYLE OF BOOST CABLE



PC-CE08-1



PC-CE08-2



PC-CE08-3



PC-CE08-4



PC-CE08-5



PC-CE08-6



PC-CE08-7



PC-CE08-8



PC-CE08-9



PC-CE08-10



PC-CE08-11



PC-CE08-12



PC-CE08-13



PC-CE08-14

SAFETY VEST & WARNING TRIANGLE



OS13001
Simple & Cheap Reflective Vest
(red & green)



OS13002
Standard Reflective Vest



OS13003
LED Reflective Vest



OS13004
LED Reflective Vest



OS13005
LED Reflective Vest



OS13006
LED Reflective Vest

Be Safe & Powerful



OS13007
Simple Reflective
Vest



OS13009
Simple Warning
Triangle



OS13011
Warning Triangle



OS13008
Reflective Vest



OS13010
Luxury Warning
Triangle



OS13012
Reflective Safety Vest



OS13013
Reflective Safety Vest

CAR MIRROR



OS02001
Clip-on Car Mirror
• Size:2x2"
• Auxiliary car front mirror, widen our sight



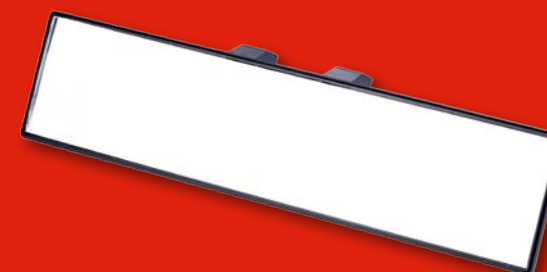
OS02002
Rectangle Suction Type Mirror
• Size:8.2x2"
• Can absorb any one place in the car



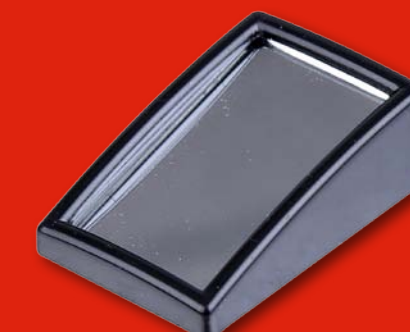
OS02003
Clip-on Car Mirror
• Size:4.5x2.2"
• Easy Install



OS02004
Child Safety Mirror
• Size:6.6x4.3"
• Can hook in the car



OS02005
Black Frame Wide Angle Flat
Rear View Mirror
• Size:12x3"
• Stylish and clean design brightens up the interior of the vehicle



OS02006
2 Pcs Blind Spot Mirror
• Size:2.4x1.6"
• Can be mapped to the rear of the vehicle, which is beneficial to the safety of the car

SMART FLOW™

FILL | RECYCLE | DRAIN | REMOVE | CONTAINER

UNMATCHED RANGE OF PRODUCTS

Develop through 10 years, SMART FLOW™ provides all of the tools to make the DIY oil change process smart & easy from filter, drain plug wrench, oil pan, to funnels.

Do you want to have the assurance that you are offering your customers the right tools for the job? Check out SMART FLOW™ complete line of high quality oil change tools that can be appreciated by any DIY consumer.



OS02007
2 Pcs Blind Spot Mirror
• Size:2.2x1.3"
• Easy to storage and save the space

OS02008
Round Can Adjustable Suction Type Mirror
• Size:3" dia.
• Can adjustable the dircion of the mirror



OS02009
2 Pcs 3" Round Rear View Blind Spot Mirror for Car
• Size:3" dia.
• Easy to carry and save space

OS02010
2pcs Can Adjustable D Type Blind Sport Mirror
• Size:2x2"
• Can adjustable 45 degree and easy to stick on



OS02011
2 Side Wide Rotatable Spot Mirror (360 Degree)
• Size:1.5" dia.
• Easy stick-on and save space

OS02012
2 Side Wide Rotatable Spot Mirror (45 Degree)
• Size:2" dia.
• Easy to stick on and adjustable

06/10/2008



FU06001
6L Drain Pan
 • Specification:6L,PP



FU06002
8L Drain Pan
 • Specification:8L,PP



FU06008
10L Drain Pan
 • Specification:10L,PP



FU06010
5L Water Tank
 • Specification:5L ,PE



FU06017
15L Water Tank
 • Specifiiaation:15L,PE



FU06003
5L European Standard Jerry Can With Funnel
 • Specification:5L,HDPE



FU06004
5L Water Jug
 • Specification:9"total length, 6.5"width,7.5"height, HDPE



FU06005
5L+2L Fuel Mix Can
 • Specification:5L+2L,HDPE



FU06011
5.3" Funnel
 • Specification: 5.25"deameter and 15" length,PP funnel and PE hose



FU06012
5.75"Funnel
 • Specification:5.75"diameter and 15.25"length,PP funnel and PE hose



FU06013
3 in 1 Funnel
 • Specification:8.25" with 5.5" ellipse and 17" length,PP



FU06014
6.25" Funnel
 • Specification:6.25" diameter and 15.75" length,PP funnel and PE hose



FU06006
20L Jerry Can
 • Specification:20L,HDPE



FU06007
10L Jerry Can
 • Specification:10L,HDPE



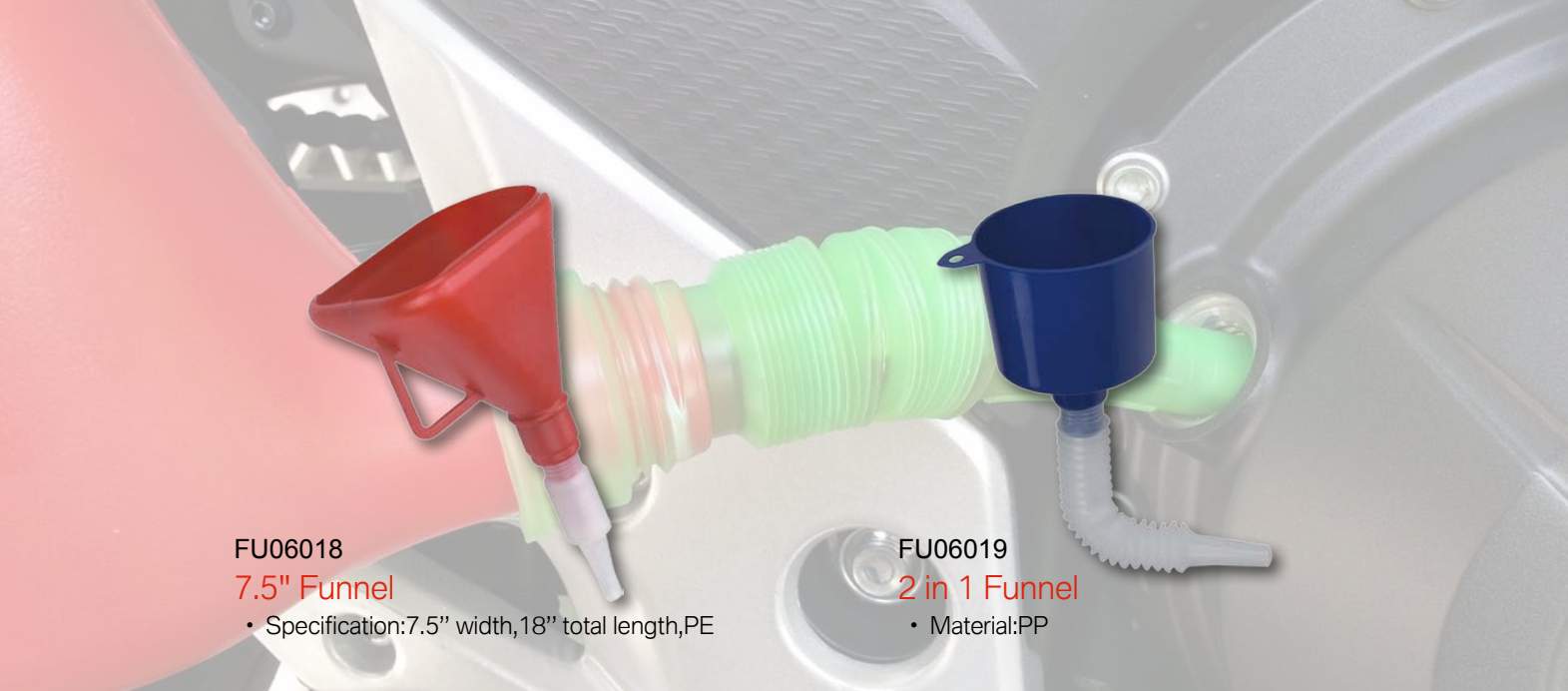
FU06009
5L Jerry Can
 • Specification:5L,HDPE



FU06015
5.5" Funnel
 • Specification:5.5" diameter,5.25"length,PP



FU06016
3.5" Funnel
 • Specification:3.5" diameter and 4.5" length,PP



FU06018
7.5" Funnel
 • Specification: 7.5" width, 18" total length, PE

FU06019
2 in 1 Funnel
 • Material: PP



FU06024
4" Funnel
 • Specification: 4" diameter, PP

FU06025
6" Funnel
 • Specification: 6" diameter, PP

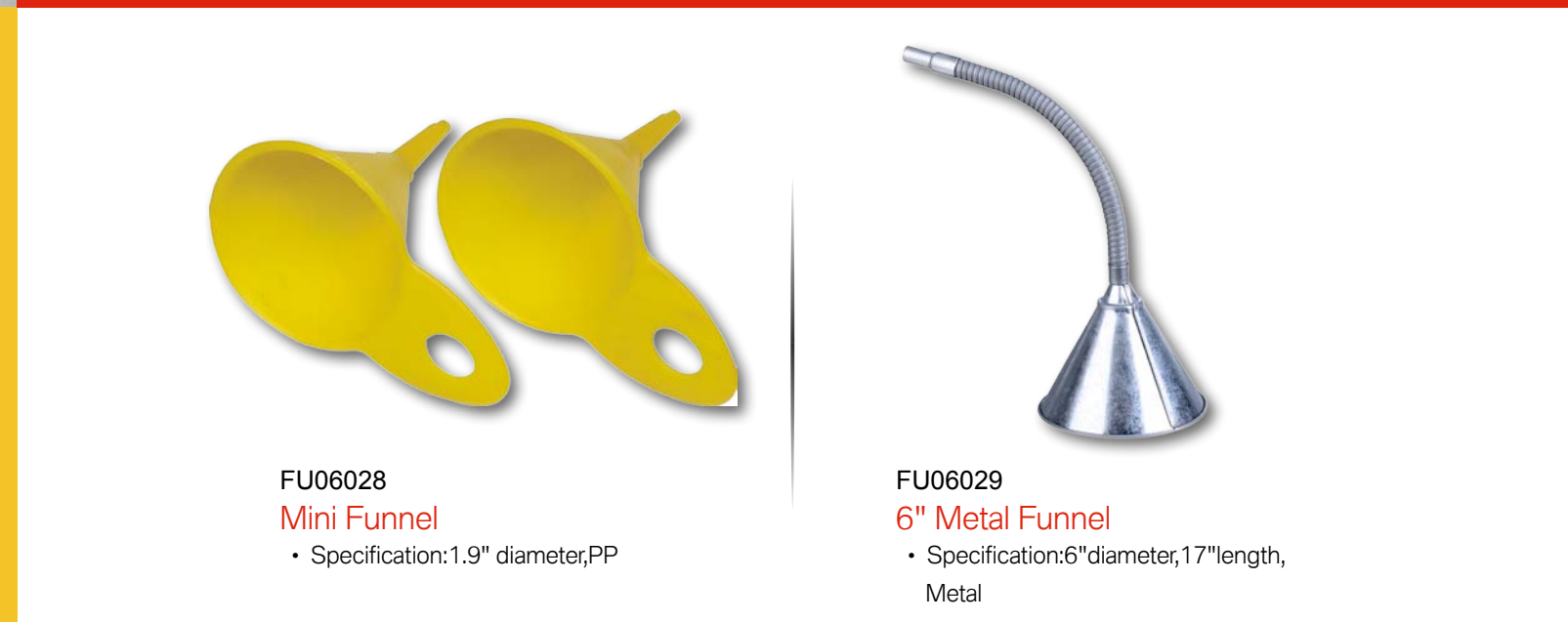
FU06026
8" Funnel
 • Specification: 8" diameter, PP

FU06027
12" Funnel
 • Specification: 12" diameter, PP



FU06020
One Liter Fuel Cup
 • Material: PP

FU06021
3.25" Funnel
 • Specification: 3.25" diameter, 4.25" total length, PP



FU06028
Mini Funnel
 • Specification: 1.9" diameter, PP

FU06029
6" Metal Funnel
 • Specification: 6" diameter, 17" length, Metal



FU06022
5.25" Funnel
 • Specification: 5.25" diameter and 6.25" length, PP

FU06023
5.25" Funnel With Cover
 • Specification: 5.25" diameter, 6.5" total length, PP



FU06030
3" Funnel
 • Specification: 3" diameter, 10.7" length, PP

FU06031
Spill Saver Oil Funnel
 • Specification: Lock-in oil filler hole, no waste and no mess, quick pouring.



FU06032

Cheap Manual Plastic Siphon Pump

- Size: oil inlet:15.7",oil let:20.9",ball dia:2",hight:3"
- Hand-operated bellows action



FU06033

Flexible Plastic Siphon Pump

- Size: 12.6" short tube, 53" long tube.
- Perfect for gasoline and other types of liquids



FU06034

2.8" Fuel Cap With Spiral Body

- Size:2.8"dia.
- Cheap and easy to storage



FU06035

2.8" Fuel Cap With Triangle Body

- Size:2.8" dia.
- Special design and hot selling type



FU06036

2.8" Fuel Cap With Anti-Slip Edge

- Size:2.8" dia.
- Cheap and easy to storage
- Special design and easy to storage



FU06037

2.8" Fuel Cap With Gridding Head

- Size:2.8" dia.
- Most popular cap



FU06038

2.8"Fuel Cap With Flower Type Head

- Size:2.8" dia.
- Cheap and easy to storage



FU06039

3pcs Drain Pan Set

- Size:1 pcs Black funnel (dia:53", nose length:102"), 1pcsBlack 8L drain pan (inner diameter:13.4", depth: 4.3"), 1pcsoil filter(length7.8")
- The urgent need for car up with petrol at the petrol three-piece set



FU06040

8L Oil Change Kit(2 in 1)

- Size:1pcs 3.15" funnel,1pcs multi-purpose funnel1pcs 20x20" oil absorbent drop mat pad and 6 (11.8x7.9") pieces of shopTowel, 2 pairs of latex gloves
- Fill oil and cleaning 2 in 1 , Very practical



FU06041

Rubber Soft Grip Cross Wrench

- Size: 14" Chrome plated shining,
- Socket size:17/19/21x23mm,,
- Soft rubber grip make you feel comfortable



FU06042

Z Type Oil Wrench

- Size:total 7.5" length,socket
- size:0.3/0.4"
- Simple and easy to use



FU06043

Belt Type Filter Wrench

- Size:belt:19.7x1x0.1", handle:8x0. 8x0.1"
- Belt can adjust you need length



FU06044

Y Type Filter Wrench

- Size:9.5"
- Curve head can adjust your need size



FU06045

New Oil Filter Wrench

- Size:length 7.8"
- Special and hot selling



FU06046

Round Oil Wrench

- Size:10.6x4"
- Simple and easy to use



FU06047

Oil Wrench With Cycle Chain

- Size:chain size:17" length with 33 gaints.handle size:8.6x1"
- Chain can adjust you need length



FU06048

Oil Filter Wrench

- Size: 7.5"
- Material: 50#/A3 Steel



FU06049

Chain Style Oil Filter Wrench

- Size: 6x2.2"
- Material: 33 bike joints



FU06050

Three Handle Spanner

- Use range: 2.4-4.7"
- Material: 45# carbon steel



FU06051

Three Handle Spanner

- Use range: 2.4-4.7"
- Material: 45# carbon steel



FU06052

Simple Z Spanner

- Size: 8.7"
- Material: 45# carbon steel

NOTE

86-574-87589868

Fax: 86-574-87577238

Email: sales@nb-autocare.com

Y&C
Y&C INTERNATIONAL